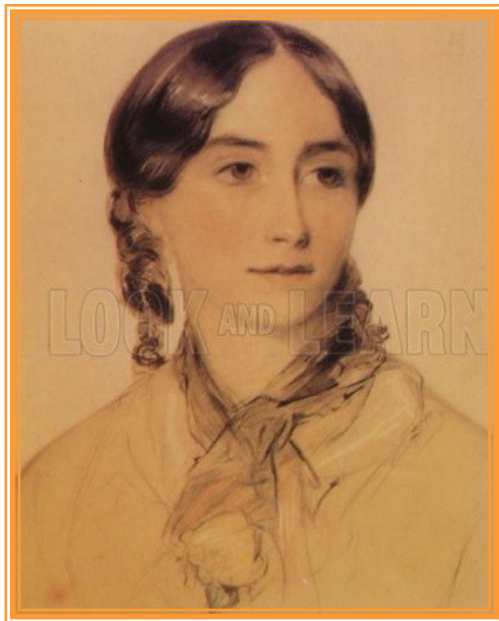


North Tuddenham The Mardle



Mary Sumner

August 2020

A Parish Newsletter

IF YOU KNOW OF ANYONE WHO IS HAVING DIFFICULTY IN OBTAINING A
PRINTED COPY OF 'THE MARDLE' -

PLEASE RING MIKE: 07951 956906

Issue 442

Mary Sumner—the Mothers' Union

Born in 1828 near Manchester, Mary Heywood moved to Hertfordshire with her family in 1832. Whilst concluding her education in Rome she met George Sumner, youngest son of the then Bishop of Winchester. They fell in love and were married in 1848, 18 months after his ordination.

In 1851, together with their two baby girls, they moved to Old Alresford, which is 9 miles north-east of Winchester. Later the family was added to with the birth of a boy, Heywood.

Mary, later witnessing the responsibilities of their eldest daughter's motherhood, determined to form a group of mothers drawn from all the social classes of Old Alresford. The group first met at the Rectory in the summer of 1876. On that occasion they were addressed by George Sumner on the subject of giving religious teaching and leadership in the home.

For the first nine years, the Mothers' Union remained a parochial organization, a format copied in a few places around the country. However, Mary addressed the women's meeting of the 1885 national Church Congress and focused on the two ideas central to her Mothers' Union group: being a good example to children, and keeping prayer central to the life of the family.

That speech led to Mothers' Union being commended by the Bishop of Winchester, Harold Browne, as a pattern to be developed across the Diocese. From there it spread rapidly in Britain and across the Commonwealth. Within a year it was operating in four continents and by the turn of the century it had 169,000 members. Mary Sumner was unanimously elected president of this international organisation in 1896 and remained actively involved in the organisation until her death in 1921.

Personal Reflection: 1 Chronicles 16 Verse 25

For great is the LORD and most worthy of praise;
he is to be feared above all gods.

C.B.

Village & Church News

St Marys Church Tower Update

- We have a provisional, conditional offer of money from an Emergency Fund towards restoration of our church tower because the Grade 1 listed building is valued so much .
- They would want the work to start by 1st Jan 2021 and to ensure this happens they would need to know how we intend to raise the remaining monies by the 30th November.
- The total cost of repair is £462,000, and while we still have the money raised last year we shall need to apply to two further charities: National Churches Trust and All Churches Trust. Then add the VAT of £77,000 which we hope to recover, and we should just scrape through!
- Yes, the cost is high, but repairing a precariously unsafe historic building in situ is a very intricate and delicate operation involving specialists working in very difficult conditions. £42 K on scaffolding, £65K securing the buttresses, £69K on ground works and underpinning and £75K to rebuild the walls parapets and staircase, are all mind-boggling sums.
- The stained glass window is to be removed, stored and with a separate grant we will conserve the medieval glass.
- The Faculty from the church to allow us to do the work has been approved in principle but we are resolving certain issues with the conditions.
- Church services may begin again in the near future. The Rector is assessing the possibilities.
- Lastly, on a personal note, Gulliver, the church dog and famous burger taster from past Tuddenham 100s is no longer with us. R.I.P.

St. Mary the Virgin—Church Notice Board

Rector

The Reverend Mark McCaghrey, The Vicarage, Back Lane,
Mattishall, NR20 3PU

Tel: 01362 882260 / e-mail: mark.mccaghrey@matvchurch.uk

Assistant Priest

Assistant Curate

The Reverend Sally Thurgill Tel. 01362 692745 **The Reverend Andrea Woods**
e-mail: sally.thurgill@matvchurch.uk e-mail: andrea.woods@matvchurch.uk

Church Office: 01362 858873 e-mail: contact@matvchurch.uk

Website: matvchurch.uk



Churchwardens

Mrs Jools Smith Tel: 07719 341282

Mrs Christine Blake Tel: 07836 708874

August 2020 CHURCH SERVICES

Church Services are starting to be held: possibly one service per parish, per month; Check with Church Office or Churchwarden

However - all of you with access to the Internet, do please join a service being held at 9.00—9.30 am each Friday morning specifically with St. Mary's and North Tuddenham parishioners in mind -

[https://us02web.zoom.us/j/83513925378?
pwd=QnZEk0lQTmF3ZEQycTJQb21LV1JQUt09](https://us02web.zoom.us/j/83513925378?pwd=QnZEk0lQTmF3ZEQycTJQb21LV1JQUt09)

OR for 10.00 a.m. Sunday Service for Benefice

[https://us02web.zoom.us/j/83401400096?
pwd=REJTtmIPUHLveHhSbmhBQURucHJnZz09](https://us02web.zoom.us/j/83401400096?pwd=REJTtmIPUHLveHhSbmhBQURucHJnZz09)

NOTE TO ALL FLORISTS: Whilst St. Mary's has restrictions placed upon it, and with building works about to commence we will only place a limited number of flowers within the church when required.

**Access to St Mary's Church By prior arrangement only
with churchwarden Jools Smith 07719 341282**

North Tuddenham Parish Council

Dear Parishioners

Very much hope this note finds you all well.

Just a very brief note this month as technically, the Parish Council is in recess over the summer. In terms of news, we are of course holding our 'Design a Flag' competition (full details in this edition of The Mardle) which we really hope our younger members of the village will enter. The flag will be made by our very talented ex-clerk Pat, who continues to be a stalwart and a pivotal part of the community despite her busy life. The flag will then fly, in pride of place, at the entrance to St Mary's loke. Good luck to all!

Another snippet of news which you might not have read about is the installation of the third defibrillator in the old phone box cum swap-shop library on Mill Road/Low Road, west. A real accolade to such a relatively small parish that has actively sought to provide these vital facilities for the safety of residents and visitors.

We are also delighted to have co-opted Andrew Harding on to the Parish Council at the last meeting. We are now a full complement again and we are very confident Andrew will bring many transferable skills to the group and be a great asset. Thanks yet again to Mike Smith for his service to the Parish Council who continues to soldier-on in his role as Highways Liaison link and of course, for his tireless work for the Church.

On that subject, Mike has news on the progress of the Church tower restoration project which is covered separately in this edition. We can also report that we have moved forward with the issue of the dualling of the A47 and the NWL Road project; Mike Smith is currently liaising with Highways England and Norfolk County Highways to organise a meeting with our Parish Council. Our comments have been formalised and sent ahead of the meeting so we are very much hoping for a progressive and fruitful discussion. A full report to the Parish Council meeting and to the public domain will be made once this meeting has taken place.

The next meeting of the Parish Council will take place remotely via Zoom on **Tuesday, 8th September** at the slightly later time of **8pm** – my apologies as I have two meetings that evening to circumnavigate. We had more members of the public join us in July but would welcome more so anyone wishing to tune in will be most welcome. Please email me on clerk.norhtuddenham@gmail.com for a link.

Enjoy the rest of the summer safely.

With all best wishes **North Tuddenham Parish Council**

Over the Centuries

Chapter 7 The Norman Conquest September 1066

Saxon life had hardly drawn breath when the Normans invaded England. The invasion was a success, the Saxon King, Harold, was killed at the Battle of Hastings 1066 AD. The Normans stamped their way of life on the English in no uncertain manner. The major Saxon landowners were deprived of their estates, those who were still alive, and the estates were granted to the supporters of King William. Much of the land along the east side of England changed hands.

Old Hall Farm shown on most maps as the site of Belhouse Hall, was seized by Earl de Warrenne, who some say was related to King William.

A Dane by the name of Starcolf, held land in North Tuddenham and Hockering and was allowed to retain his holdings as a reward for supporting William. A small area of land in North Tuddenham, known to my generation as 'The Carr Wo', may have been part of Starcolf's holdings, since 'Carr' is derived from 'Kerr', a Norse word, which describes well the area of land in question.

1109 AD Ely Priory, which held the rights to Badley Moor, became Ely Cathedral, and the Prior replaced by the Bishop of Ely. The Bishop created new manors by enclosing land from Badley Moor, (i.e common land). Fees from these manors and estates contributed to the wealth of Ely Cathedral.

A new manor was created in North Tuddenham enclosing part of Badley Moor and being known as St Clere's Manor. Today it the site of Pound Farm.

As a manor, it was named after a woman canonized as a result of her religious work in Europe. Two such people are recorded by history, one from the C12 AD and the other from the C13C to C14 AD.

I was unable to find much information concerning the latter St Clere. However the C12 St Clere is recorded as 'much travelled in Europe where she founded several religious houses for women', presumably nunneries. 'She was highly regarded in Europe' and would fit in well with the creation of St Clere's Manor. The obligatory C12 moat remains very much intact at St Clere's, and as far as I know a moat still remains around Belhouse Hall.

Brain teasers - July Crossword Solution



4 Brain teasers for August

1. A sundial has the fewest moving parts of any timepiece. Which has the most?
2. What is unusual about the following words: revive, banana, grammar, voodoo, assess, potato, dresser, uneven?
3. What makes this number unique -- 8,549,176,320?
4. You're standing in a hallway with three light switches on the wall, each of which turns on a different lamp inside a closed room. You can't see inside the room, and you can't open the door except to enter the room. You can enter the room only once, and when you do, all the lamps must be turned off.
How can you tell which switch turns on which lamp?

Courtesy of Forbes online

August Recipe

Fig, Caramelised Onion and Goats Cheese Tart

Ingredients

For the Pastry Case

250g plain flour
125g unsalted diced cold butter
2 eggs
Large pinch salt
Very cold water

Or you could buy a packet of shortcrust if you'd prefer.

Filling

6 white onions, sliced finely
2 goats cheese logs
Handful of crushed walnuts
5 or 6 figs depending on size
Honey to drizzle

Method

Put the flour and butter in baking bowl and rub together until it resembles breadcrumbs . Add the egg yolks, salt, and using knife, stir together. Roll into a ball , if the pastry feels dry, add a touch of water.

Pop in fridge for 30 minutes.

Remove from fridge, leave for 5 minutes then roll out .

Line an 8 inch flan dish and pop back in fridge for 30 minutes before baking it blind for 20 minutes.

Cook the onions in a little oil and butter for 40 minutes until golden. Line the base of the tart with them, then cut each goats cheese into four and sit around the tart facing upwards. Crumble the walnuts over the top with the halved figs, skin side down.

Place a round of cooking parchment over the top and cook for 10 minutes at 190 degrees. Remove the parchment, drizzle with a little runny honey & cook for a further 10 minutes.

Serve warm with a green salad

FORTHCOMING VILLAGE EVENTS

Sadly, all events still on hold pending additional clarification from the Government concerning the Covid-19 crisis

At some point in the future we intend to continue with our events:

Dann's Farm Open Day (probably 2021 now)

Battle of Britain Organ Concert

VILLAGE HALL EVENTS

Due to the Coronavirus epidemic, Government restrictions on public gatherings necessitate temporary cancellation of Village Hall events. Please contact your organiser for any of the usual clubs for further information.

Gardeners News: After much consideration it has been decided to CANCEL ALL FURTHER MEETINGS for 2020 Meetings are expected to re-commence January 2021 onward, watch out for further details. David Riches contact No. 01603 88045

Sincere thanks to Christine Mobbs for Village Hall information

IMPORTANT NUMBERS

Mardle Editorial Team

Mike 07951 956906 **Jools** 07719 341282 **Jo** 07802 252228

Chrissie 07836 708874 **Ronnie Nelson** 01362 637422

Contact e-mail addresses for Mardle/enquiries

Jools Smith smithjools2012@gmail.com

Mike Smith mike_smith8@talktalk.net

For inclusion of events or changes to rear page ring Anne 07780 753369 before 16th month

Parish Council Website: www.northtuddenham.net

Village Hall : hire at very reasonable rates - contact

**TWO ACRE
KENNELS & CATTERY**



**Hawthorn Lodge
Low Road, North Tuddenham
Dereham NR20 3DH
Tel: 01362 850216
Email: info@twoacrekennels.co.uk**

**SOOTS
CHIMNEY SWEEP**

**Friendly, prompt, clean & tidy service
Sweeping certificates issued
Fully Insured**



**Tel: 01603 880704
Mob: 07879 333395**



The Acorn Hut Farm Shop & Plant Nursery

Watercress Lane, Mattishall NR20 3RJ

Open Wednesday to Saturday 10am – 4pm, Sunday 10am – 2pm

Tel: 07885 666868 Email: theacornhutfarmshop@gmail.com

We stock locally sourced Norfolk Artisan products from around the County.
Fresh fruit & vegetables home grown & from local suppliers.

We have a range of frozen fish, meats and joints - beef, lamb & pork,
sausages, bacon & burgers.

Fresh meat & Fish orders taken weekly, along with fresh bakery bread.
Fresh Cromer Crabs here on Friday's.

We have a range of quirky gifts in our shop & more to come soon!!

As Autumn arrives, we will have a good selection of winter hanging baskets
available, along with pansies & violas & winter bedding, shrubs, ornamen-
tal trees, pots, compost & grow bags.

*Follow us on Facebook – The Acorn Hut Farm Shop & Plant Nursery or Two
Oaks Plant Supply for updates, events & late-night openings.*

T.E.S.

NORTH TUDDENHAM GARAGE

Servicing, MOT's & repairs on all makes, models & sizes.

To book your vehicle in please phone: 01362 637564

For 24/7 Breakdown & Recovery Call: 01362 637722



R H DUFFIELD

Septic Tanks Emptied

Drains Unblocked

Pressure Jetting Service

Cherry Tree Farm Church Lane

Stanfield Dereham NR20 4AP

01328 700275 07802 312963

LONG DISTANCE TRAVEL

ALL AIRPORTS, SEAPORTS and STATIONS

COURIER /PARCEL SERVICE AVAILABLE

BUSINESS CONTRACTS WELCOME

FRIENDLY, SAFE and RELIABLE SERVICE

For all your airport and long distance travel requirements

Please call:

Tony Westwood on 01362 693785

www.longdistancetravel.co.uk

